



# Tracking the Many-Headed Monster: Embedding Evaluation in Museum Networks

American Association of Museums  
Annual Meeting

Tuesday, May 25  
3:45 PM-5:00 PM



# Session Overview

- Introduction to Networks
  - Christine Reich
- International Coalition of Sites of Conscience
  - Elizabeth Sevchenko
- Nanoscale Informal Science Education Network
  - Marcie Benne and Vrylena Olney



# Network Definitions

- “Any *netlike* combination of filaments, lines, veins, passages, or the like”
- “*a system* of interrelated buildings, offices, stations, etc., especially over a large area or throughout a country, territory, region, etc.”
- “*an association of individuals* having a common interest, formed to provide mutual assistance, helpful information, or the like”

[www.dictionary.com](http://www.dictionary.com)



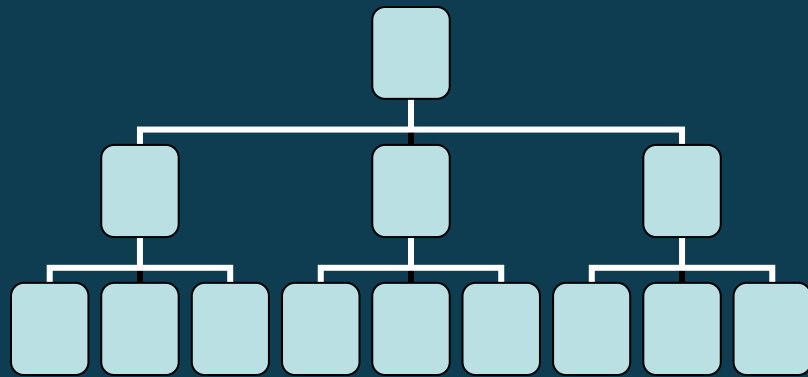
# Networks as complex systems

- Successful complex systems have:
  - redundancy of efforts,
  - diversity of expertise,
  - neighbor interactions,
  - distributed control, and
  - feedback loops

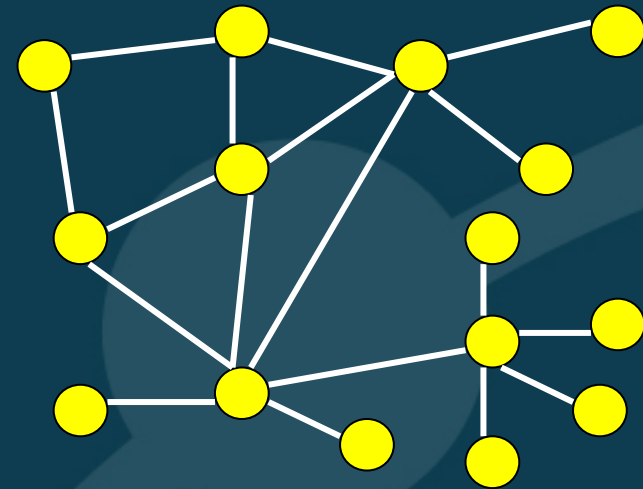
(Lemke and Sabelli, 2008)



# Structure



Traditional organization



Network



# Leadership

- Distributed leadership
  - Multiple leaders working simultaneously
  - Leadership defined by followers, not title
  - Leaders use context-based tools and resources

(Spillane, 2009)



# Activities

- Widely distributed
- Self-directed
- Self-selected
- Diverse in scope and implementation



# Evaluation

- Evaluation as a connector
  - Learning through evaluation
  - Part of the feedback loop
- Evaluation as a documentation tool
  - Capturing what is happening
  - Measuring where there is an impact